

# SLIDING DOOR GEAR SYSTEMS

FURNITURE

TIMBER

INDUSTRIAL

GLASS

STAINLESS STEEL



UK SELECTION



# A leading company in the sector

Saheco specialises in the design,  
manufacture and distribution of  
mechanisms for sliding doors.

## WELCOME TO OUR WORLD

SAHECO are a manufacturer of high quality and innovative sliding door gear systems for all types of sliding doors, based near Barcelona in Spain. The company has over 40 years of experience in the design, manufacture and supply of sliding door gear systems, both to the Spanish domestic market where the company is a market leader, but also internationally, with trading relationships in place with distributors in over 30 countries.

Today SAHECO deals with over 3,000 customers on a worldwide basis, has a group turnover in excess of £12 million per annum, has a product portfolio comprising over 1500 individual product references, and owns 15 internationally recognised and approved patents. In the last 12 months the company has manufactured and supplied in excess of 450,000 sliding door accessory packs, including over 1 million rollers, and in the region of 2,800km of sliding door track, in various materials.







As part of an ambitious expansion plan, in May 2011, Saheco established a fully owned UK subsidiary (SAHECO UK LTD) in recognition of the strategic importance of the UK market. The company has initiated a business plan based on the establishment of official and approved SAHECO UK LTD Business partners; primarily distributors these partners have all been fully trained on the SAHECO product range and hold comprehensive stocks of SAHECO product, so are able to advise the best SAHECO solution for any application, and then supply the requisite product rapidly and efficiently.

This UK specific catalogue has been designed to introduce you, the customer, to this exciting SAHECO UK LTD project, and more importantly to introduce you to the SAHECO product range; many of our best-selling systems for furniture, timber partitions and glazed partitions are shown in full detail; all offer the two primary features which characterise all SAHECO products; high quality with a smooth and quiet sliding action combined with exceptional value for money. This catalogue does not, and was not intended to show our complete product range, but we are confident that if you, the customer, have an application requiring a sliding door, then we will have a solution for you; if you cannot see an appropriate product in this catalogue please visit our website [saheco.co.uk](http://saheco.co.uk) or contact your local SAHECO UK LTD Business Partner who will be delighted to assist you.

Once again welcome to our world....we look forward to working together with you in the coming months and years and to providing you with the first class service we pride ourselves on, and which we always consider to be of equal importance to the top quality product portfolio we can offer.

# SLIDING DOOR GEAR SYSTEMS

FURNITURE  
TIMBER  
INDUSTRIAL  
GLASS  
STAINLESS STEEL

		FURNITURE kg	TIMBER kg	INDUSTRIAL kg	GLASS kg	STAINLESS STEEL kg
Pàg.	Product	MAX WEIGHT PER PANEL				
6	SF-16   SF-26 SF-33   SF-53 Packed sets available 	16   26 30   50				
7	SF-42 Packed sets available  SF-51 Packed sets available 	42 50				
8	SF-S35 SF-20 D Packed sets available 	35 10				
9	SF-70 SF-150		70 150			
10	SF-E40   SF-E75 Packed sets available  SF-A61   SF-A81 Packed sets available 		40   75 60   80			
11	SF-A125 SF-A300		125 300			
12	SF-RA60   SF-RA80 SF-RA100   SF-RA125		60   80 100   125			
13	SF-RA300 SF-A84 D		300 40			
14	SF Timber special applications		80			
15	SF SOFTBRAKE		80			
16	SF Packed sets					
17	SV-A40   SV-A60   SV-A80 SV-A100   SV-A125				40   60   80 100   125	
18	SV-A200   SV-A300 SV-X80				200   300 80	
19	SV Glass special applications				80	
20	SV SOFTBRAKE				80	
21	STAINLESS STEEL TUBULAR SYSTEMS SV-I45   SV-I46 SV-I120 SV-I120 TERRA					45 120 120
22	LIFESPACES		150   250		40   150   250	

# Another way to understand **SPACE**

More than **40 years** manufacturing sliding door systems

Distribution in more than **30 countries**

In excess of **3,000 customers**

Group turnover over **£ 12 million per annum**

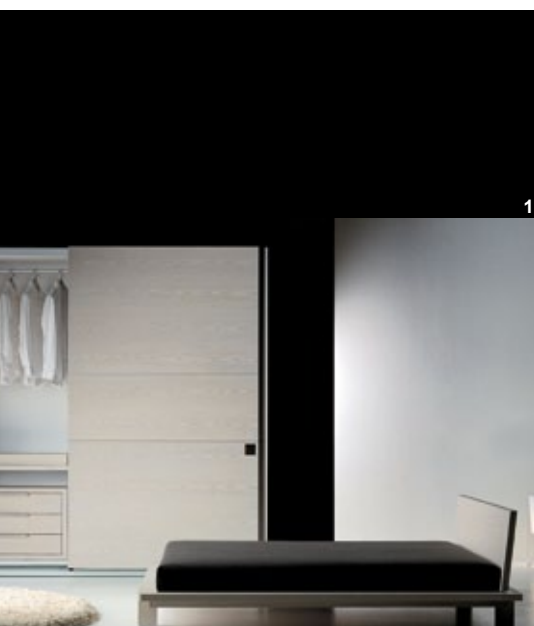
More than **1,500 products** in the full product catalogues

**15** Internationally recognised patents

And during the last 12 months:

In excess of **450,000 accessory sets** supplied

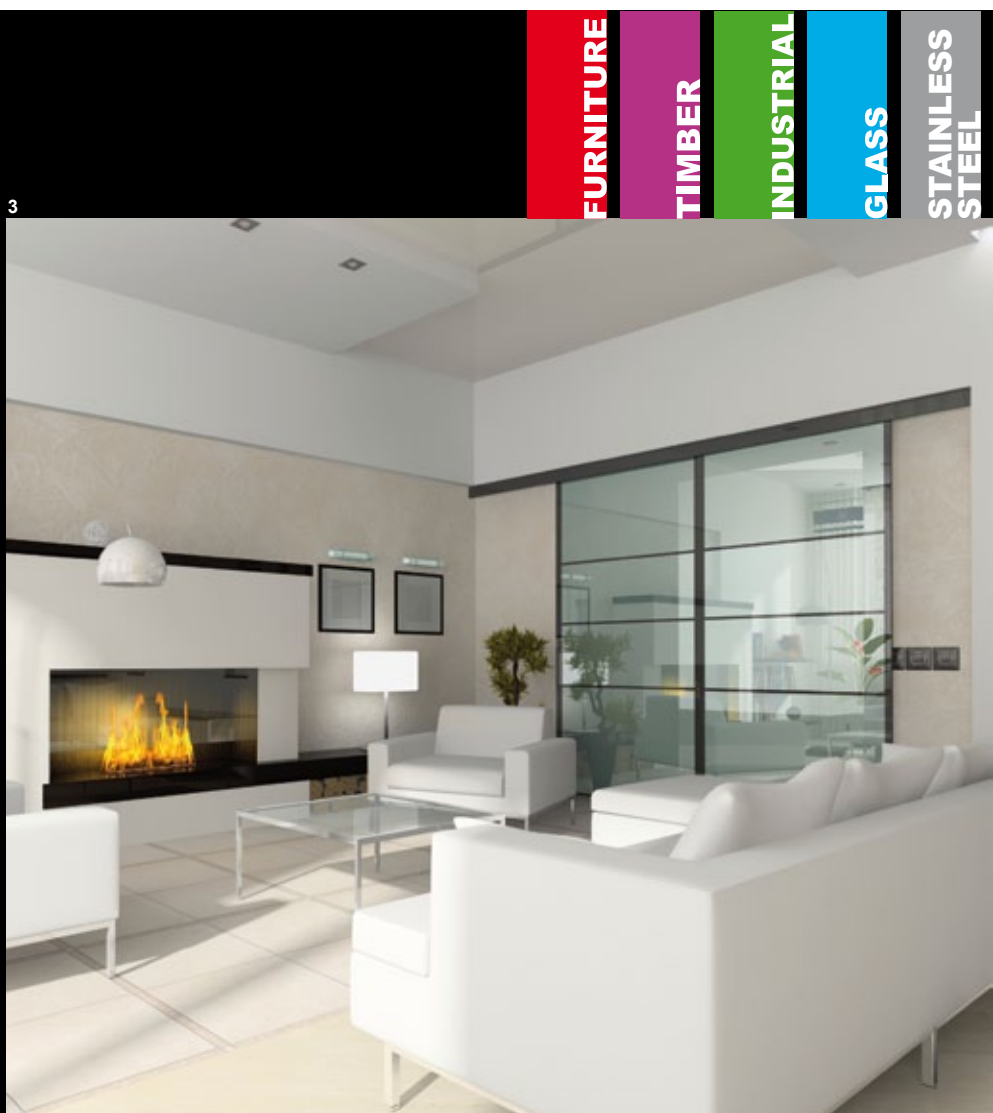
In excess of **2,800 kilometres of tracks** manufactured and distributed  
(equivalent to the distance from Barcelona to Moscow)



1



2



3

**1/2** Aluminium framed  
systems

**3** Straight sliding  
systems

**FURNITURE**

**TIMBER**

**INDUSTRIAL**

**GLASS**

**STAINLESS  
STEEL**

People and their lifestyles evolve. Everything around them also changes, including their living space, which must adapt to the new ways of living and working, to people's daily needs and their preferences...

We in Saheco are aware that this happens and, for this reason, we understand spaces as ecosystems which evolve and are transformed with the same rhythm as the inhabitants. Consequently, we design and develop systems for sliding doors which are adapted to people's lifestyles and can be integrated into their spaces.

**EXPERIENCE:** We have a long and far-reaching history in the industry. We have been manufacturing for more than 30 years.

**SPECIALISTS:** We make systems for all kinds of sliding doors.

**MARKETING:** We travel all over the world and sell our products in dozens of countries to thousands of customers.

**INNOVATORS:** Saheco products are designed to satisfy the consumers' present and future needs.

#### **THESE AND OTHER OUTSTANDING FEATURES HAVE MADE US MARKET LEADERS**

Leaders in the design, manufacture and distribution of top quality sliding, sliding folding and sliding stacking systems.



4

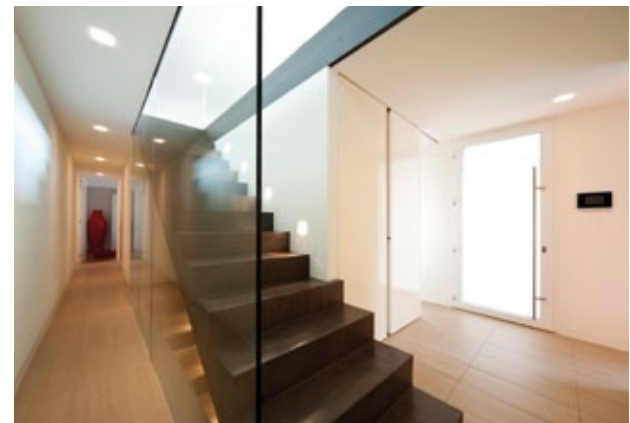
**4** Sliding stacking systems

**5** Straight sliding systems

**6** Low headroom systems



5



6



**SF-16 SF-26**

**Application.** High quality *top hung* sliding door gear systems for *straight sliding* timber doors for domestic or light duty commercial furniture with concealed fittings.

**Features.** Minimalist aluminium top track ribbed for ease of fitting and recessed into cupboard top and therefore concealed.

Same top track for either 16Kgs or 26Kgs applications.

Top hangers fixed to back face of cupboard door via boss type housings and therefore concealed.

Vertical adjustment +/- 3mm and an eccentric clear threshold bottom guide.

**TOP HUNG  
STRAIGHT SLIDING****16kg****26kg**

9x9 mm

14x13 mm

16 - 19 mm



Cód.

16/23  
16/33  
16/532 m  
3 m  
5 m

Top track. Anodised aluminium SAA

16/05

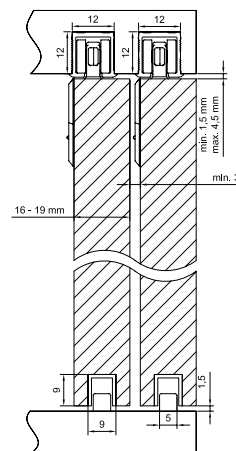
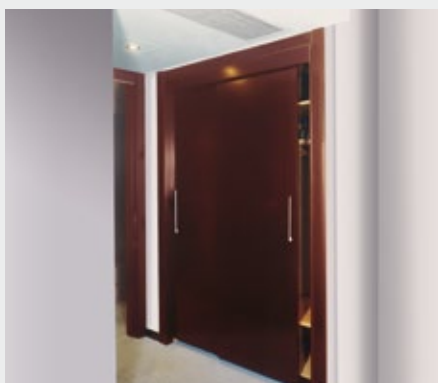
SF-16. Single door complete fitting set

26/05

SF-26. Single door complete fitting set

16/24  
16/34  
16/542 m  
3 m  
5 m

Bottom guide insert. Plastic. Black

**SF-33 SF-53**

**Application.** High quality *top hung* sliding door gear systems for *straight sliding* timber doors; offering excellent value for money for domestic or light / medium duty commercial furniture.

**Features.** Aluminium top track common to both systems available in single or double profiles. Top hangers can either be mortised flush or face fixed to back of door.

Vertical adjustment +/- 6mm via three fixing positions for the top hanger plate.

Concealed top track stopper / retainer.

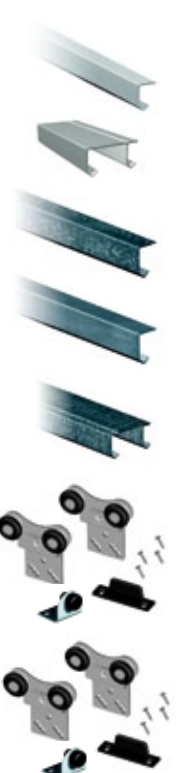
Clear threshold bottom guides.

**TOP HUNG  
STRAIGHT SLIDING****30 kg****50 kg**Packed sets  
available

16 - 19 mm

20x26 mm

54x27 mm



Cód.

33/20  
33/30  
33/502 m  
3 m  
5 mSingle top track. Aluminium.  
Not anodised32/20  
32/30  
32/502 m  
3 m  
5 mDouble top track. Aluminium.  
Not anodised20/20  
20/25  
20/302 m  
2,5 m  
3 m

Single top track. Galvanised steel

20/40  
20/504 m  
5 m

Single top track. Zinc plated steel

30/20  
30/30  
30/502 m  
3 m  
5 m

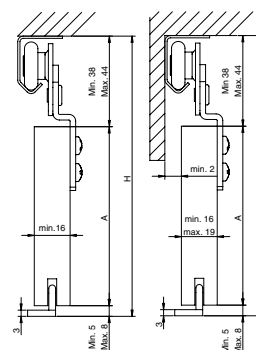
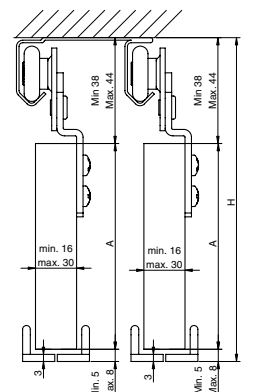
Double top track. Galvanised steel

21/20  
21/25  
21/302 m  
2,5 m  
3 m

SF-33. Single door complete fitting set

53/00

SF-53. Single door complete fitting set

A. max = H-43  
A. min. = H-52A. max = H-43  
A. min. = H-52

## SF-42



**Application.** High quality **bottom rolling** sliding door gear system with concealed fittings for **straight sliding** timber doors; for domestic or light/medium duty commercial furniture.

**Features.** Identical top and bottom tracks for ease of stock holding – ribbed for ease of fitting and available in a variety of finishes.  
Concealed when fitted.  
Top guides and bottom rollers mortised into the back face of the door so concealed when fitted.  
Top guide spring loaded for ease of door installation or removal.  
Bottom rollers c/w ball bearings available as standard or with reinforced mounting plates for high use commercial applications.

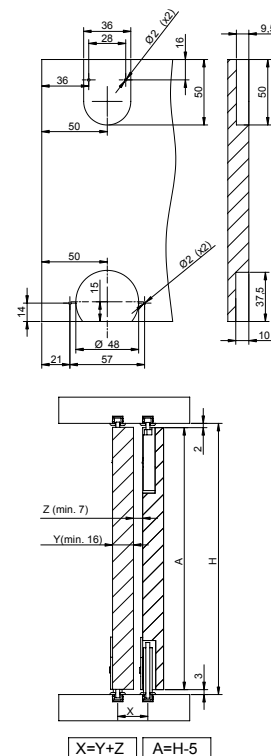
### BOTTOM ROLLING STRAIGHT SLIDING RECESSED TRACKS

42 kg

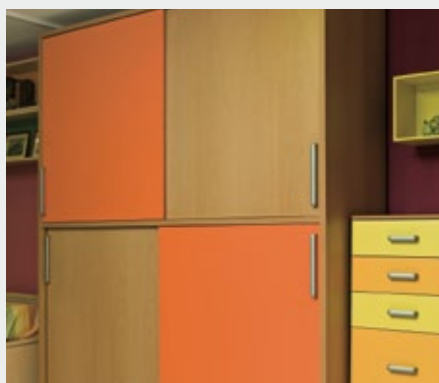
Packed sets  
available



Cód.		
22/20	2 m	Top/bottom track. Recessed.
22/30	3 m	Plastic. Ivory
22/50	5 m	
22/29	2 m	Top/bottom track. Recessed.
22/39	3 m	Plastic. Grey
22/59	5 m	
22/21	2 m	Top/bottom track. Recessed.
22/31	3 m	Plastic. Walnut
22/51	5 m	
22/26	2 m	Top/bottom track. Recessed.
22/36	3 m	Aluminium. Not anodised
22/56	5 m	
22/27	2 m	Top/bottom track. Recessed.
22/37	3 m	Anodised aluminium. Black
22/57	5 m	
22/28	2 m	Top/bottom track. Recessed.
22/38	3 m	Anodised aluminium. Copper
22/58	5 m	



## SF-51



**Application.** High quality **bottom rolling** sliding door gear system for **straight sliding** timber doors; for domestic or medium / heavy duty commercial furniture.

**Features.** Identical top and bottom tracks for ease of stock holding.  
Raised with either push fit or face fixed profiles for ease of installation.  
Top guides and bottom rollers mortised into the back face of the door so concealed when fitted  
Top guides spring loaded for ease of door installation or removal.  
Bottom rollers c/w ball bearings and with vertical adjustment  $\pm 3$ mm with roller in installed position.  
Braking plate to hold door(s) in fully closed position.

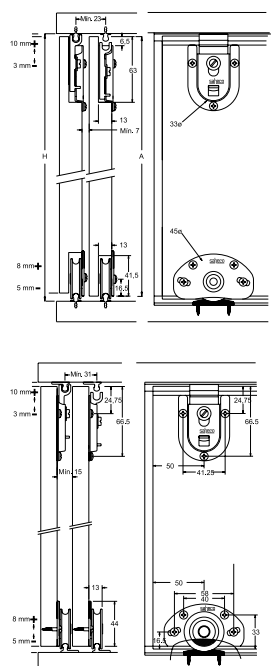
### BOTTOM ROLLING STRAIGHT SLIDING NONE RECESSED TRACKS

50 kg

Packed sets  
available



Cód.		
51/22	2 m	Top/bottom track. Face fixed.
51/32	3 m	Anodised aluminium. SAA
51/52	5 m	
52/22	2 m	Top/bottom track. Push fixed.
52/32	3 m	Anodised aluminium. SAA
52/52	5 m	
51/20	2 m	Top/bottom track. Face fixed.
51/30	3 m	Anodised aluminium. GAA
51/50	5 m	
52/20	2 m	Top/bottom track. Push fixed.
52/30	3 m	Anodised aluminium. GAA
52/50	5 m	
51/21	2 m	Top/bottom track. Face fixed.
51/31	3 m	Anodised aluminium. Black
51/51	5 m	
52/21	2 m	Top/bottom track. Push fixed.
52/31	3 m	Anodised aluminium. Black
52/51	5 m	
51/00		SF-51 Single door complete fitting set



## SF-S35



**Application.** High quality *top hung* sliding door gear system for *straight sliding* timber doors: For domestic or light/medium duty commercial furniture. Doors *fully overlay* furniture carcass.

**Features.** Top and bottom tracks fully concealed when doors are in the fully closed position (full overlay). Top hangers and bottom guides complete with ball bearings to provide a smooth and quiet sliding action. Vertical adjustment via hanger/guide bracket slot fixings +/-3 mm. Fully concealed top track stoppers / retainers and bottom track stoppers to ensure even stopping.

TOP HUNG  
STRAIGHT SLIDING  
VORFRONT – FULLY OVERLAY DOORS

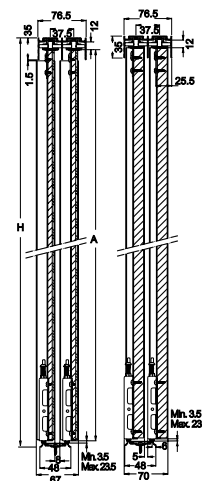
35 kg



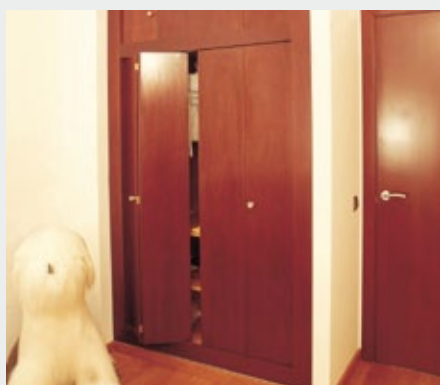
MAX. 20 mm 55x15.5 mm 43x35 mm



Cód.		
65/22	2 m	Double top track. Aluminium. Not anodised
65/32	3 m	
65/52	5 m	
65/26	2 m	Double bottom track. Aluminium. Not anodised
65/36	3 m	
65/56	5 m	
36/00		SF-S35. Single door complete fitting set. INNER
36/01		SF-S35. Single door complete fitting set. OUTER



## SF-20 D



**Application.** High quality *top hung* sliding door gear system for *sliding folding* timber doors. For domestic or light duty commercial furniture. Pairs of doors ONLY.

**Features.** Top and bottom tracks in anodised aluminium. Can be fully recessed or surface fixed. First panel pivoted as opposed to hinged to carcass side allowing for EQUAL WIDTH panels. All fittings c/w tubular housings to allow for ease of fixing. Single drilled hole required ONLY. Hangers' c/w ball bearings to provide a smooth and quiet sliding folding action. Also adjustable to allow for ease of installation. Supplied c/w asymmetric hinges to allow greater fold back action to allow maximum access to furniture. Top / bottom track stoppers c/w springs to allow a cushioned and smooth closing action.

TOP HUNG  
SLIDING FOLDING  
PAIRS OF DOORS ONLY

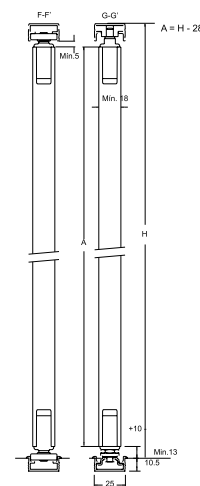
10 kg



MIN. 18 mm MAX. 500 mm 25x14 mm 25x12 mm



Cód.		
14/36	3,60 m	Top track. Aluminium. Not anodised
14/37		Top track. Anodised aluminium. GAA
21/00		SF-20D. Complete fitting set for a PAIR of doors
21/36	3,60 m	Bottom track. Aluminium. Not anodised
21/37		Bottom track. Anodised aluminium. GAA





## SF-70



**Application.** High quality *bottom rolling* sliding door gear systems for *straight sliding* timber doors; offering exceptional value for money for domestic or medium / heavy duty timber partitions. Ideal for patio door applications.

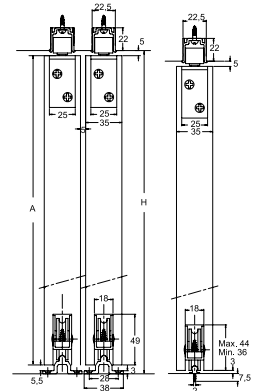
**Features.** Top guide channel and bottom support track common to SF-70 and SF-150 (see below) systems for ease of stock holding. Top guide channel recessed and therefore concealed when fitted. Bottom support tracks either push fit or face fixed for ease of installation. Range of finishes available. Top guide rollers c/w ball bearings common to SF-70 and SF-150 (see below) systems for ease of stock holding. Bottom rollers mortised so concealed when fitted.

### BOTTOM ROLLING STRAIGHT SLIDING

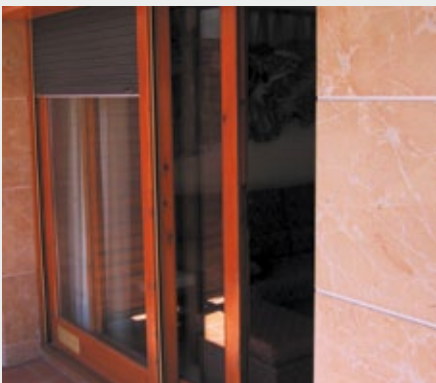
70 kg



Cód.		
41/31	3 m	Top guide track. Aluminium.
41/51	5 m	Not anodised.
50/30	3 m	Bottom support track. Face fixed. Aluminium. Not anodised.
51/22	2 m	Bottom support track. Face fixed. Anodised aluminium. SAA
51/32	3 m	
51/52	5 m	
52/22	2 m	Bottom support track. Push fixed. Anodised aluminium. SAA
52/32	3 m	
52/52	5 m	
51/20	2 m	Bottom support track. Face fixed. Anodised aluminium. GAA
51/30	3 m	
51/50	5 m	
52/20	2 m	Bottom support track. Push fixed. Anodised aluminium. GAA
52/30	3 m	
52/50	5 m	
51/21	2 m	Bottom support track. Face fixed. Anodised aluminium. Black
51/31	3 m	
51/51	5 m	
52/21	2 m	Bottom support track. Push fixed. Anodised aluminium. Black
52/31	3 m	
52/51	5 m	
71/00		SF-70. Single door complete fitting set



## SF-150



**Application.** High quality *bottom rolling* sliding door gear systems for *straight sliding* timber doors; offering exceptional value for money for domestic or medium / heavy duty timber partitions. Ideal for patio door applications.

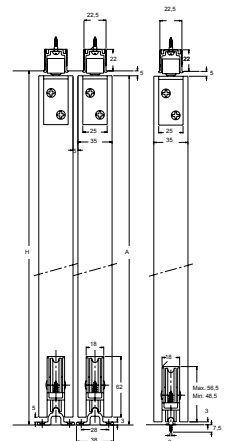
**Features.** Top guide channel and bottom support track common to SF-150 and SF-70 (see above) systems for ease of stock holding. Top guide channel recessed and therefore concealed when fitted. Bottom support tracks either push fit or face fixed for ease of installation. Range of finishes available. Top guide rollers c/w ball bearings common to SF-150 and SF-70 (see above) systems for ease of stock holding. Bottom rollers mortised so concealed when fitted.

### BOTTOM ROLLING STRAIGHT SLIDING

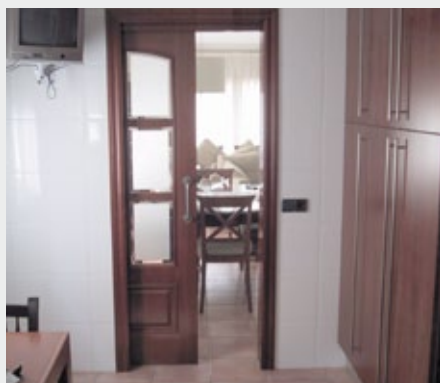
150 kg



Cód.		
41/31	3 m	Top guide track. Aluminium.
41/51	5 m	Not anodised.
50/30	3 m	Bottom support track. Face fixed. Aluminium. Not anodised.
51/22	2 m	Bottom support track. Face fixed. Anodised aluminium. SAA
51/32	3 m	
51/52	5 m	
52/22	2 m	Bottom support track. Push fixed. Anodised aluminium. SAA
52/32	3 m	
52/52	5 m	
51/20	2 m	Bottom support track. Face fixed. Anodised aluminium. GAA
51/30	3 m	
51/50	5 m	
52/20	2 m	Bottom support track. Push fixed. Anodised aluminium. GAA
52/30	3 m	
52/50	5 m	
51/21	2 m	Bottom support track. Face fixed. Anodised aluminium. Black
51/31	3 m	
51/51	5 m	
52/21	2 m	Bottom support track. Push fixed. Anodised aluminium. Black
52/31	3 m	
52/51	5 m	
150/00		SF-150. Single door complete fitting set



## SF-E40 SF-E75



**Application.** Quality budget **top hung** sliding door gear systems for **straight sliding** timber doors; offering exceptional value for money for domestic or light / medium duty timber partitions.

**Features.** Good quality box section anodised aluminium top track.  
Top track common to both systems  
Optional clip on anodised aluminium pelmet cover to conceal top track and fittings.  
Alternative clip on brackets for mounting a timber pelmet cover (not supplied).  
Top hangers with patented roller skate mechanism (single SF E40 or double SF E75 rollers) c/w ball bearings. Vertical adjustment +/- 10mm plus lateral adjustment.  
Double concealed top track stoppers / retainers and clear threshold concealed bottom guide.

### TOP HUNG STRAIGHT SLIDING

40 kg

75 kg

Packed sets  
available



MIN. 27 mm

30x29 mm

34x20 mm

22.5x22 mm



Cód.

60/20(1)	2 m	Top track. Anodised aluminium. SAA (1)
60/30(1)	3 m	
60/50(1)	5 m	
61/20(2)	2 m	Top track. Aluminium. Not anodised (2)
61/30(2)	3 m	
61/50(2)	5 m	

SF-E40

39/00	SF-E40. Single door complete fitting set
-------	--

SF-E75

75/01	SF-E75. Single door complete fitting set
-------	--

OPTIONAL

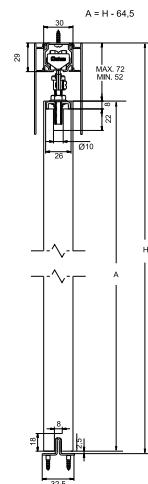
64/23	2 m	Clip on pelmet cover. Anodised aluminium. SAA
64/33	3 m	
64/53	5 m	

62/22	2 m	Full width side fixing profile. Anodised aluminium. SAA
62/32	3 m	
62/52	5 m	

60/54	Top track side fixing bracket
-------	-------------------------------

60/56	Clip on bracket for timber pelmet covers (not supplied)
-------	---

80/57	Top track end cap
-------	-------------------



## SF-A61 SF-A81



**Application.** High quality **top hung** sliding door gear systems for **straight sliding** timber doors; combining a high quality sliding action with exceptional value for money. For domestic or light / medium duty timber partitions.

**Features.** Good quality box section anodised aluminium top track. Top track common to both systems. Optional clip on anodised aluminium pelmet cover to conceal top track and fittings. Alternative clip on brackets for mounting a timber pelmet cover (not supplied). Optional full width side fixing profile in anodised aluminium to provide a neat and aesthetically pleasing side fixing solution. Top hangers with high quality double rollers c/w ball bearings and elastic function to ensure an exceptionally smooth and quiet sliding action. Vertical adjustment +/- 5mm. Top hanger brackets face fixed. Double concealed top track stoppers (single retainer) and clear threshold concealed bottom guide.

### TOP HUNG STRAIGHT SLIDING

60 kg

80 kg

Packed sets  
available



MIN. 27 mm

30x29 mm

34x20 mm

43.5x37 mm

70x30 mm



Cód.

60/20(1)	2 m	Top track. Anodised aluminium. SAA (1)
60/30(1)	3 m	
60/50(1)	5 m	
61/20(2)	2 m	Top track. Aluminium. Not anodised (2)
61/30(2)	3 m	
61/50(2)	5 m	

62/22	2 m	Full width side fixing profile. Anodised aluminium. SAA
62/32	3 m	
62/52	5 m	

62/21	2 m	Top track. For tiled ceilings. Anodised aluminium. SAA
62/31	3 m	
62/51	5 m	

61/00	SF-A61. Single door complete fitting set
-------	--

81/00	SF-A81. Single door complete fitting set
-------	--

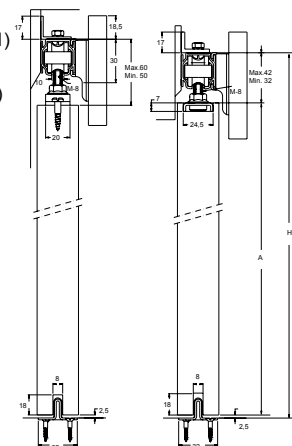
OPTIONAL

64/23	2 m	Clip on pelmet cover. Anodised aluminium. SAA
64/33	3 m	
64/53	5 m	

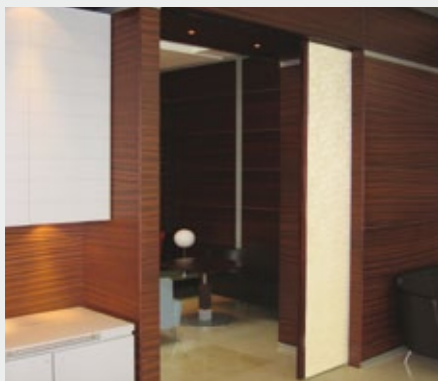
60/54	Top track side fixing bracket
-------	-------------------------------

60/56	Clip on bracket for timber pelmet covers (not supplied)
-------	---

80/57	Top track end cap
-------	-------------------



## SF-A125



**Application.** High quality *top hung* sliding door gear systems for *straight sliding* timber doors; For domestic or medium / heavy duty commercial timber partitions.

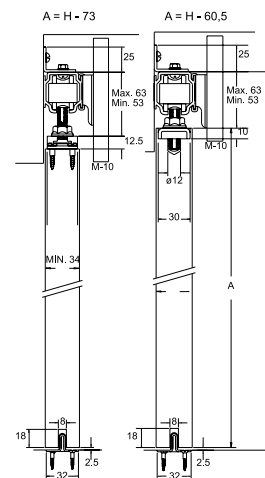
**Features.** Good quality box section anodised aluminium top track. Optional clip on anodised aluminium pelmet cover to conceal top track and fittings. Optional top track for false ceiling applications in anodised aluminium. Top hangers c/w ball bearings and hard wearing plastic rollers to support heavy doors and provide a smooth and quiet sliding action. Vertical adjustment +/- 5mm. Top hanger brackets face fixed. Double concealed top track stoppers (single retainer) and clear threshold concealed bottom guide. Optional full width aluminium bottom guide channel and bottom rollers for wider panels.

### TOP HUNG STRAIGHT SLIDING

125 kg



Cód.		
125/20	2 m	
125/30	3 m	
125/50	5 m	Top track. Anodised aluminium. SAA
125/21	2 m	
125/31	3 m	Top track. Aluminium. Not anodised
125/51	5 m	
125/22	2 m	
125/32	3 m	Top track. For tiled ceilings. Anodised aluminium. SAA
125/52	5 m	
125/01		SF-A125. Single door complete fitting set
104/23	2 m	Clip on pelmet cover. OPTIONAL
104/33	3 m	Anodised aluminium. SAA
104/53	5 m	
41/31	3 m	Bottom guide channel. Aluminium. Not anodised
41/51	5 m	
41/10		Bottom guide roller
125/57		Top track end cap



## SF-A300



**Application.** High quality *top hung* sliding door gear system for *straight sliding* timber doors. For domestic or *very* heavy duty commercial timber partitions.

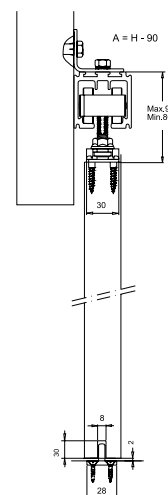
**Features.** Good quality heavy duty box section anodised aluminium top track. Top hangers c/w ball bearings and hard wearing plastic rollers to support very heavy doors and provide a smooth and quiet sliding action. Vertical adjustment +/- 9mm. Double concealed top track stoppers and retainers and clear threshold concealed bottom guide. Optional full width aluminium bottom guide channel and bottom rollers for wider panels.

### TOP HUNG STRAIGHT SLIDING

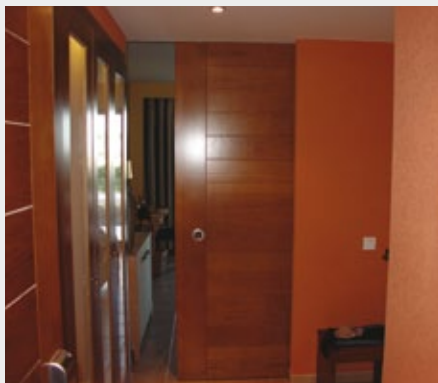
300 kg



Cód.		
301/30	3 m	
301/45	4,5 m	Top track. Anodised aluminium. SAA
301/60	6 m	
300/00		Complete set of accessories SF-A300
41/31	3 m	Bottom guide channel. Aluminium. OPTIONAL
41/51	5 m	Not anodised
41/10		Bottom guide roller
300/57		Top track end cap



## SF-RA60 SF-RA80



**Application.** High quality *top hung* sliding door gear system for *straight sliding* timber doors. *Low headroom* system to produce an aesthetically pleasing appearance with all fittings concealed. For domestic or light / medium duty commercial partitions.

**Features.** Good quality box section anodised aluminium top track. Same track for both systems. Optional full width side fixing profile in anodised aluminium to provide a neat and aesthetically pleasing side fixing solution. Optional top track for false ceiling applications in anodised aluminium. Top hangers with high quality double rollers c/w ball bearings and elastic function to ensure an exceptionally smooth and quiet sliding action. Hanger brackets fully concealed in top edge of the panel c/w vertical adjustment mechanism (+/-5mm) that allows height to be adjusted with the panel installed. Minimal gap 2mm between top of door and underside of top track when installed. Double concealed top track stoppers and retainers and clear threshold concealed bottom guide.

TOP HUNG  
STRAIGHT SLIDING  
LOW HEADROOM

60 kg

80 kg



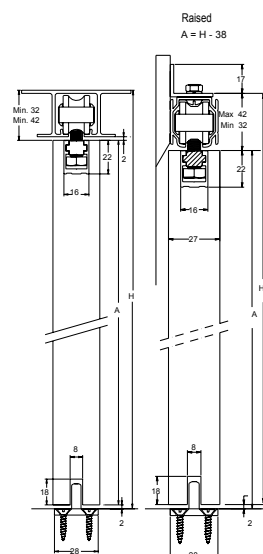
MIN. 25 mm

30x29 mm

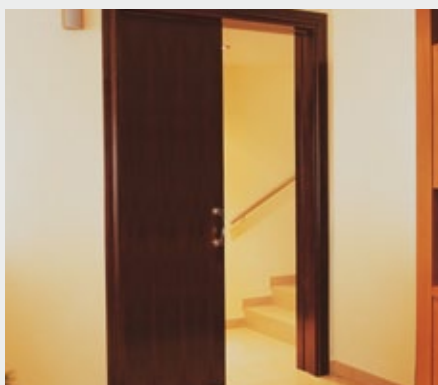
43.5x37 mm

70x30 mm

Cód.		
60/20	2 m	Top track. Anodised aluminium. SAA
60/30	3 m	
60/50	5 m	
61/20	2 m	Top track. Aluminium. Not anodised
61/30	3 m	
61/50	5 m	
62/22	2 m	Full width side fixing profile. Anodised aluminium. SAA
62/32	3 m	
62/52	5 m	
62/21	2 m	Top track. For tiled ceilings. Anodised aluminium. SAA
62/31	3 m	
62/51	5 m	
60/04		SF-RA60. Single door complete fitting set
80/04		SF-RA80. Single door complete fitting set



## SF-RA100 SF-RA125



**Application.** High quality *top hung* sliding door gear system for *straight sliding* timber doors. *Low headroom* system to produce an aesthetically pleasing appearance with all fittings concealed. For domestic or medium / heavy duty commercial partitions.

**Features.** Good quality box section anodised aluminium top track. Same track for both systems. Optional top track for false ceiling applications in anodised aluminium. Top hangers with high quality double rollers c/w ball bearings and elastic function to ensure an exceptionally smooth and quiet sliding action. Hanger brackets fully concealed in top edge of the panel c/w vertical adjustment mechanism (+/-5mm) that allows height to be adjusted with the panel installed. Minimal gap 2mm between top of door and underside of top track when installed. Double concealed top track stoppers and retainers and clear threshold concealed bottom guide.

TOP HUNG  
STRAIGHT SLIDING  
LOW HEADROOM

100 kg

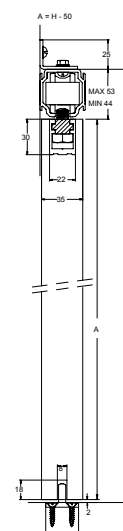
125 kg



MIN. 35 mm

38.5x40.5 mm

Cód.		
125/20	2 m	Top track. Anodised aluminium. SAA
125/30	3 m	
125/50	5 m	
125/21	2 m	Top track. Aluminium. Not anodised
125/31	3 m	
125/51	5 m	
125/22	2 m	Top track. For tiled ceilings. Anodised aluminium. SAA
125/32	3 m	
125/52	5 m	
100/04		SF-RA100. Single door complete fitting set
125/04		SF-RA125. Single door complete fitting set





## SF-RA300



**Application.** High quality *top hung* sliding door gear system for *straight sliding* timber doors.

**Low headroom** system to produce an aesthetically pleasing appearance with all fittings concealed. For domestic or heavy / very heavy duty commercial partitions.

**Features.** Good quality box section anodised aluminium top track. Top hangers with high quality quadruple rollers c/w ball bearings and elastic function to ensure an exceptionally smooth and quiet sliding action. Hanger brackets fully concealed in top edge of the panel c/w vertical adjustment mechanism (+/- 5mm) that allows height to be adjusted with the panel installed. Minimal gap 2mm between top of door and underside of top track when installed. Double concealed top track stoppers and retainers and clear threshold concealed bottom guide.

### TOP HUNG STRAIGHT SLIDING LOW HEADROOM

300 kg

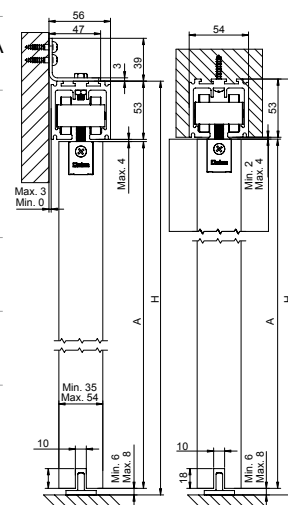


Cód.		
301/30	3 m	Top track. Anodised aluminium. SAA
301/45	4,5 m	
301/60	6 m	

300/04 SF-RA300. Single door complete fitting set

300/64 Top track side fixing bracket

300/57 Top track end cap



A. max = H-61  
A. min. = H-65

## SF-A84 D



**Application.** High quality *top hung* sliding door gear system for *sliding folding* timber doors.

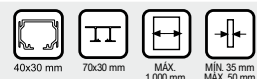
For **EQUAL WIDTH** panels. **Low headroom** system to provide an aesthetically pleasing appearance with fittings fully concealed. For domestic or light / medium duty commercial folding partitions.

**Features.** Good quality box section anodised aluminium top track. Optional top track for false ceiling applications in anodised aluminium.

Top hangers with high quality double rollers c/w ball bearings and elastic function to ensure an exceptionally smooth and quiet sliding folding action. First panel pivoted as opposed to hinged to side jamb allowing for EQUAL WIDTH panels. No bottom guide channel allowing for a clear threshold (pairs of panels ONLY). Top hanger and top pivot fixings fully concealed into the top edge of the door c/w vertical adjustment (+/- 3mm). Minimal gap 5mm between top of door and underside of top track when installed. Braking plate to hold door(s) in fully closed position.

### TOP HUNG FOLDING SLIDING LOW HEADROOM

40 kg



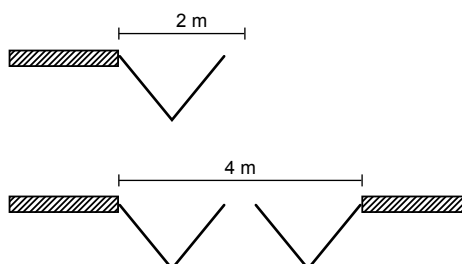
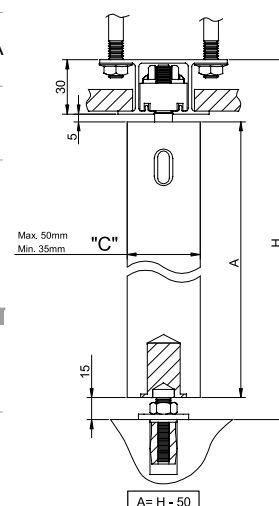
Cód.		
62/23	2 m	Top track. Anodised aluminium. SAA
62/33	3 m	
62/53	5 m	

62/21 2 m Top track. For tiled ceilings.  
62/31 3 m Anodised aluminium. SAA  
62/51 5 m

88/00 SF-A84D. Complete fitting set for a PAIR of doors (hinges not included)

506/10 Adjustable concealed hinge (Please allow three hinges for panel to panel joints)

Please note: Standard butt hinges (102 x 76mm) can be used as an alternative to the above concealed hinges. Not supplied.





## SYNCHRONISED BIPARTING



**Application.** High quality *top hung* sliding door gear system for *straight sliding* timber doors. For domestic or light / medium duty commercial timber partitions. A *synchronised biparting* system which allows a *pair* of biparting doors to operate together.

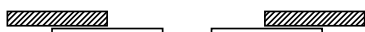
**Features.** A special application which utilises the SF-A81 system (see page 10). The standard sets are complimented by an additional cable and pulley system which connects the two doors together and allows them to both open and close together, thereby complimenting the high quality sliding action of the standard system with added functionality.

TOP HUNG  
STRAIGHT SLIDING  
SYNCHRONISED BIPARTING

80 kg per panel



40x30 mm



Cód.

62/23 2 m  
62/33 3 m  
62/53 5 m

Top track. Anodised aluminium. SAA

81/00

Single door complete fitting set (2 sets required)

101/12

Complete fitting set for a **PAIR** of synchronised biparting doors.

## TELESCOPIC PROGRESSIVE



**Application.** High quality *top hung* sliding door gear system for *straight sliding* timber doors. For domestic or light / medium duty commercial timber partitions. A *telescopic* system which allows either *two or three* doors to operate together to form a stepped partition across the opening when fully closed, and a neat stack of panels to one side of the opening when fully open.

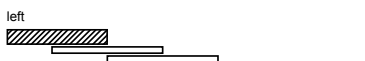
**Features.** A special application which utilises the SF-A81 system (see page 10). The standard sets are complimented by an additional cable and pulley system which connects the two or three doors together and allows them to both open and close together, thereby complimenting the high quality sliding action of the standard system with added functionality.

TOP HUNG  
STRAIGHT SLIDING  
TELESCOPIC

80 kg per panel



40x30 mm



Cód.

62/23 2 m  
62/33 3 m  
62/53 5 m

Top track. Anodised aluminium. SAA

101/20

Complete fitting set for **TWO** telescopic doors.  
**RIGHT HAND** Door width 600mm-1200mm.  
Max door weight 80Kgs.

101/19

Complete fitting set for **TWO** telescopic doors.  
**LEFT HAND** Door width 600mm-1200mm.  
Max door weight 80Kgs.

101/22

Complete fitting set for **THREE** telescopic doors.  
**RIGHT HAND** Door width 600mm-1200mm.  
Max door weight 80Kgs.

101/23

Complete fitting set for **THREE** telescopic doors.  
**LEFT HAND** Door width 600mm-1200mm.  
Max door weight 80Kgs.SYNCHRONISED TELESCOPIC  
PROGRESSIVE

**Application.** High quality *top hung* sliding door gear system for *straight sliding* timber doors. For domestic or light / medium duty commercial timber partitions. A *synchronised telescopic* system which combines the features of the synchronised biparting and *two* door telescopic systems shown above. A total of *four* doors are connected together forming a stepped partition across the opening when fully closed, and neat stacks of panels on both sides of the opening when fully open.

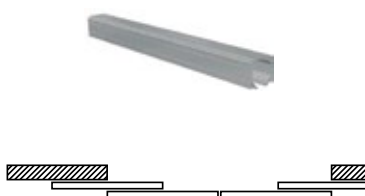
**Features.** A special application which utilises the SF-A81 system (see page 10). The standard sets are complimented by an additional cable and pulley system which connects the four doors together, thereby complimenting the high quality sliding action of the standard system with added functionality.

TOP HUNG  
STRAIGHT SLIDING  
SYNCHRONISED TELESCOPIC

80 kg per panel



40x30 mm



Cód.

62/23 2 m  
62/33 3 m  
62/53 5 m

Top track. Anodised aluminium. SAA

101/21

Complete fitting set for **FOUR** synchronised telescopic doors. Door width 600-840mm.  
Max door weight 80Kgs.



## SF Softbrake

**Application.** High quality *soft close braking* mechanism for **top hung straight** sliding timber doors. For domestic or light / medium duty commercial timber partitions and **pocket door applications**.

**Features.** Suitable for use with almost all **top hung straight sliding** door gear systems for timber panels and pocket doors which utilise a box section top track (including a special version of the **SAHECO SF-A81** system - see below). A patented two stage mechanism; firstly a piston gently slows and stops the sliding door then the closing mechanism gently and quietly pulls the door into the fully closed or open or both position(s). The mechanism acts only on the last 100mm of the doors travel, thereby protecting the edge of the door from striking the frame jamb on either or both the opening and closing cycles. Available as a stand alone product which can be fitted to virtually any standard straight sliding door system (including being retrofitted to existing applications) or in complete sets which comprise the top track, single door fitting set and either **one or two** softbrake mechanisms. The **single** softbrake set brakes the door on **either** the opening or closing cycle, whilst the double softbrake set brakes the door on **both** the opening and closing cycles.

### TOP HUNG STRAIGHT SLIDING UNIVERSAL SOFT CLOSING / OPENING MECHANISM

80 kg

Packed sets  
available



33x33 mm



MIN. 27 mm



Cód.

105/20 2 m  
105/30 3 m  
105/50 5 m

Top track. Anodised aluminium. SAA

81/00 SF-A81 Single door complete fitting set

67/58 UNIVERSAL  
SF-SOFTBRAKE set

#### PACKED SETS

982/20 SF-SOFTBRAKE – Complete fitting set  
for single door including one softbrake  
mechanism.

983/20 SF-SOFTBRAKE – Complete fitting set  
for single door including two softbrake  
mechanisms

Saheco Profile



Sliding door structure





The Saheco packed sets range are all complete sets of fittings to suit various types of straight sliding and sliding folding furniture and timber partition applications. In all cases the sets contain appropriate lengths of track(s) together with the necessary number of fitting sets to suit the particular application. Supplied either blister packed or boxed as indicated in the below table.

SYSTEM	APPLICATION	MAX DOOR WEIGHT	MAX DOOR WIDTH	DESCRIPTION	BLISTER PACKED	BOXED	PAGE No.
SF-25	Two door set	25	1000 mm	Bottom rolling straight sliding system for furniture applications <b>SET CONTENTS:</b> 4 x top/bottom tracks 2m + 2 x single door fitting sets	part number 728/21		n/a
SF-25	Three door set	25	1000 mm	Bottom rolling straight sliding system for furniture applications <b>SET CONTENTS:</b> 4 x top/bottom tracks 3m + 3 x single door fitting sets		part number 925/30	n/a
SF-51	Two door set	50	1000 mm	Bottom rolling straight sliding system for furniture applications <b>SET CONTENTS:</b> 4 x top/bottom tracks 2m + 2 x single door fitting sets	part number 751/21		7
SF-51	Three door set	50	1000 mm	Bottom rolling straight sliding system for furniture applications <b>SET CONTENTS:</b> 4 x top/bottom tracks 3m + 3 x single door fitting sets		part number 951/30	7
SF-33	One door set	30	1000 mm	Top hung straight sliding system for furniture applications <b>SET CONTENTS:</b> 1 x single top track 2m + 1 x single door fitting set	part number 733/20		6
SF-33	Two door set	30	1000 mm	Top hung straight sliding system for furniture applications <b>SET CONTENTS:</b> 1 x double top track 2m + 2 x single door fitting sets	part number 733/21		6
SF-33	Three door set	30	1000 mm	Top hung straight sliding system for furniture applications <b>SET CONTENTS:</b> 1 x double top track 3m + 3x single door fitting sets		part number 933/30	6
SF-53	Two door set	45	1000 mm	Top hung straight sliding system for furniture applications <b>SET CONTENTS:</b> 1 x double top track 2m + 2 x single door fitting sets	part number 754/21		6
SF-53	Three door set	45	1000 mm	Top hung straight sliding system for furniture applications <b>SET CONTENTS:</b> 1 x double top track 3m + 3x single door fitting sets		part number 953/30	6
SF-42	Two door set	42	1000 mm	Bottom rolling straight sliding system for furniture applications <b>SET CONTENTS:</b> 4 x top/bottom tracks 2m + 2 x single door fitting sets	part number 742/21		7
SF-42	Three door set	42	1000 mm	Bottom rolling straight sliding system for furniture applications <b>SET CONTENTS:</b> 4 x top/bottom tracks 3m + 3 x single door fitting sets		part number 942/30	7
SF-20D	Two door set	10	500 mm	Top hung sliding folding system for furniture applications <b>SET CONTENTS:</b> 1 x top track + 1 x bottom track + 1 x fitting set for a pair of doors	part number 723/20		8
SF-20D	Four door set	10	500 mm	Top hung sliding folding system for furniture applications <b>SET CONTENTS:</b> 2 x top tracks + 2 x bottom tracks + 2 x fitting sets for pairs of doors	part number 723/21		8
SF-E40	One door set	40	750 mm	Top hung straight sliding system for timber partitions <b>SET CONTENTS:</b> 1 x top track 1.5m + 1 x single door fitting set		part number 941/15	10
SF-E40	One door set	40	1000 mm	Top hung straight sliding system for timber partitions <b>SET CONTENTS:</b> 1 x top track 2m + 1 x single door fitting set		part number 941/20	10
SF-E75	One door set	75	1000 mm	Top hung straight sliding system for timber partitions <b>SET CONTENTS:</b> 1 x top track 2m + 1 x single door fitting set		part number 976/20	10
SF-A61	One door set	60	1000 mm	Top hung straight sliding system for timber partitions <b>SET CONTENTS:</b> 1 x top track 2m + 1 x single door fitting set	part number 763/20		10
SF-A81	One door set	80	750 mm	Top hung straight sliding system for timber partitions <b>SET CONTENTS:</b> 1 x top track 1.5m + 1 x single door fitting set	part number 783/15		10
SF-A81	One door set	80	1000 mm	Top hung straight sliding system for timber partitions <b>SET CONTENTS:</b> 1 x top track 2m + 1 x single door fitting set	part number 788/20		10
SF-A81 SOFTBRAKE	One door set	80	1000 mm	Top hung straight sliding system for timber partitions <b>SET CONTENTS:</b> 1 x top track 2m + 1 x single door fitting set + 1 x <b>softbrake</b>		part number 982/20	15
SF-A81 SOFTBRAKE	One door set	80	1000 mm	Top hung straight sliding system for timber partitions <b>SET CONTENTS:</b> 1 x top track 2m + 1 x single door fitting set + 2 x <b>softbrakes</b>		part number 983/20	15

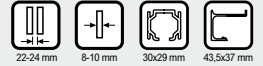


**SV-A40 / A60 / A80**

**Application.** High quality **top hung** sliding door gear systems for **straight sliding** frameless glass doors. For domestic or light / medium duty commercial partitions.

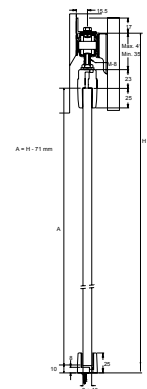
**Features.** Good quality box section anodised aluminium top track. Same track for all three systems. Optional clip on anodised aluminium pelmet cover to conceal top track and fittings. Optional full length side fixing profile in anodised aluminium to provide a neat and aesthetically pleasing side fixing solution. Top hangers with high quality double rollers c/w ball bearings and elastic function to ensure an exceptionally smooth and quiet sliding action. Vertical adjustment +/- 3mm. Glass clamps to connect hangers to top of glass panel. **NO DRILLING OF GLASS REQUIRED.** Adjustable clear threshold bottom guide as standard. Optional full length aluminium bottom guide channel c/w draft / sound reducing brush strip. Double concealed top track stoppers (single retainer).

**FIXED PANEL OPTIONS ALSO AVAILABLE. SV-A40F / SV-A60F / SV-A80F.** Simple additional profiles can be added to the existing standard sets to provide either a single fixed glass panel on either side of the sliding glass panel, or two fixed glass panels on both sides of the sliding glass panel, the latter creating a glass pocket for the sliding glass door.

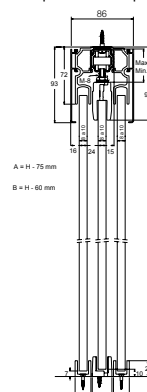
**TOP HUNG  
STRAIGHT SLIDING  
INCLUDES FIXED PANEL OPTION****40 kg 60 kg 80 kg**

Cód.		
66/20	2 m	Top track. Anodised aluminium. SAA
66/30	3 m	
66/50	5 m	
66/21	2 m	Top track. Aluminium. Not anodised
66/31	3 m	
66/51	5 m	
66/24	2 m	Full width side fixing profile. Anodised aluminium. SAA
66/34	3 m	
66/54	5 m	
41/22	2 m	Full width bottom guide channel c/w brush strip. Aluminium. Not anodised. To suit 8-12mm thick glass.
41/32	3 m	
41/62	6 m	
56/00		SV-A40. Single door complete fitting set
66/00		SV-A60. Single door complete fitting set
86/00		SV-A80. Single door complete fitting set
<b>FIXED PANNEL OPTIONS</b>		
63/20	2 m	Fixed glass profile. Anodised aluminium. SAA
63/30	3 m	
63/50	5 m	
64/20	2 m	Pelmet cover for fixed glass. Anodised aluminium. SAA
64/30	3 m	
64/50	5 m	
64/21	2 m	Pelmet cover for fixed glass. Anodised aluminium. White
64/31	3 m	
64/51	5 m	
64/22	2 m	Pelmet cover for fixed glass. Anodised aluminium. PSS
64/32	3 m	
60/61		Separator plate for fixed glass

SV-A40 | SV-A60 | SV-A80



SV-A40 F | SV-A60 F | SV-A80 F

**SV-A100 / A125**

**Application.** High quality **top hung** sliding door gear systems for **straight sliding** frameless glass doors. For domestic or medium / heavy duty commercial partitions.

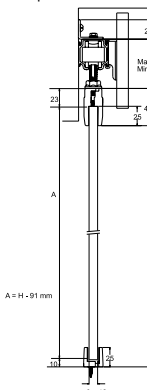
**Features.** Good quality box section anodised aluminium top track. Same track for both systems. Optional clip on anodised aluminium pelmet cover to conceal top track and fittings. Top hangers with high quality double rollers c/w ball bearings and elastic function to ensure an exceptionally smooth and quiet sliding action. Vertical adjustment +/- 5mm. Glass clamps to connect hangers to top of glass panel. **NO DRILLING OF GLASS REQUIRED.** Adjustable clear threshold bottom guide as standard. Optional full length aluminium bottom guide channel c/w draft / sound reducing brush strip. Double concealed top track stoppers and retainers.

**FIXED PANEL OPTIONS ALSO AVAILABLE. SV-A100F / SV-A125F.** Simple additional profiles can be added to the existing standard sets to provide either a single fixed glass panel on either side of the sliding glass panel, or two fixed glass panels on both sides of the sliding glass panel, the latter creating a glass pocket for the sliding glass door.

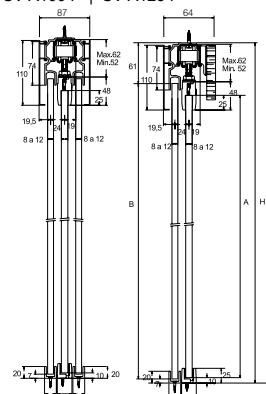
**TOP HUNG  
STRAIGHT SLIDING  
INCLUDES FIXED PANEL OPTION****100 kg 125 kg**

Cód.		
126/20	2 m	Top track. Anodised aluminium. SAA
126/30	3 m	
126/50	5 m	
126/21	2 m	Top track. Aluminium. Not anodised
126/31	3 m	
126/51	5 m	
41/22	2 m	Full width bottom guide channel c/w brush strip. Aluminium. Not anodised. To suit 8-12mm thick glass.
41/32	3 m	
41/62	6 m	
116/00		SV-A100. Single door complete fitting set
126/00		SV-A125. Single door complete fitting set
<b>FIXED PANNEL OPTIONS</b>		
103/20	2 m	Fixed glass profile. Anodised aluminium. SAA
103/30	3 m	
103/50	5 m	
104/20	2 m	Pelmet cover for fixed glass. Anodised aluminium. SAA
104/30	3 m	
104/50	5 m	
104/21	2 m	Pelmet cover for fixed glass. Anodised aluminium. White
104/31	3 m	
104/51	5 m	
104/22	2 m	Pelmet cover for fixed glass. Anodised aluminium. PSS
104/32	3 m	
60/61		Separator plate for fixed glass

SV-A100 | SV-A125



SV-A100 F | SV-A125 F



## SV-A200 SV-A300



**Application.** High quality *top hung* sliding door gear systems for *straight sliding* frameless glass doors. For domestic or heavy / very heavy duty commercial partitions. *SV A300* system can accommodate frameless glass panels of up to 4000mm height x 2500mm x 12mm thick.

**Features.** Good quality heavy duty box section anodised aluminium top track. Same track for both systems. Top hangers with high quality hard wearing plastic double rollers c/w ball bearings and elastic function to ensure an exceptionally smooth and quiet sliding action. Vertical adjustment +/-5.5mm. Glass clamps to connect hangers to top of glass panel.

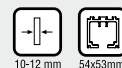
**NO DRILLING OF GLASS REQUIRED.**

Adjustable clear threshold bottom guide as standard. Optional full length aluminium bottom guide channel c/w draft / sound reducing brush strip.

Double concealed top track stoppers and retainers.

TOP HUNG  
STRAIGHT SLIDING

200 kg 300 kg

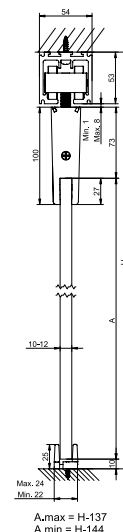
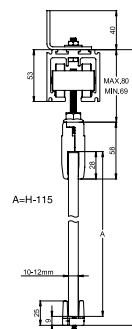


Cód.		
256/15	1,5 m	Top track. Anodised aluminium. SAA
256/22	2,25 m	
256/30	3 m	
256/37	3,75 m	
256/45	4,5 m	
256/60	6 m	

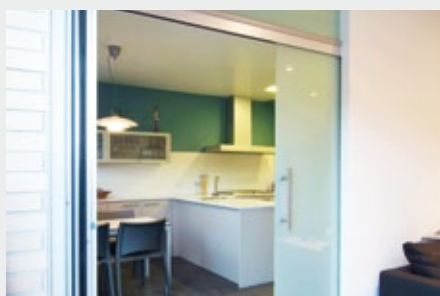
41/22	2 m	Full width bottom guide channel c/w brush strip. Aluminium. Not anodised. To suit 8-12mm thick glass.
41/32	3 m	
41/62	6 m	

206/00	SV-A200. Single door complete fitting set
--------	---

306/00	SV-A300. Single door complete fitting set
--------	---



## SV-X80



**Application.** High quality *top hung* sliding door gear system for *straight sliding* frameless glass panels. For domestic or light / medium duty commercial partitions. The *mechanism* is *concealed* within the top track giving an enhanced visual appearance. *Fixed panels* can also be accommodated.

**Features.** Good quality anodised aluminium top track. Can be soffit fixed or side fixed to an adjacent glass over panel. Optional anodised aluminium profile to accommodate an adjacent fixed glass panel. Also optional clip on anodised aluminium pelmet cover which can be attached on one or both sides of the top track / fixed glass panel profile to provide an attractive and uniform box like appearance to the header mechanism. Top hangers with high quality hard wearing rollers c/w ball bearings to give an exceptionally smooth and quiet sliding action. Off set hanger clamps which allows glass to extend into the top track profile thereby concealing the mechanism completely. Vertical adjustment +/- 3mm. Double concealed top track stoppers and retainers. **NO DRILLING OF GLASS REQUIRED.** Adjustable clear threshold bottom guide as standard. Optional full width aluminium bottom guide channel c/w draft / sound reducing brush strip. Double concealed top track stoppers and retainers.

TOP HUNG  
STRAIGHT SLIDING  
CONCEALED MECHANISM  
INCLUDES FIXED PANEL OPTION

80 kg



Cód.		
87/21	2 m	Top track. Anodised aluminium. SAA
87/31	3 m	
87/51	5 m	

87/23	2 m	Fixed glass profile. Anodised aluminium. SAA
87/33	3 m	
87/53	5 m	

84/21	2 m	Clip on pelmet cover. Anodised aluminium. SAA
84/31	3 m	
84/51	5 m	

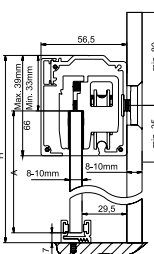
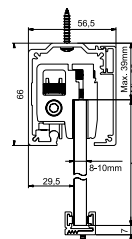
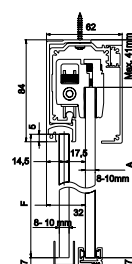
84/23	2 m	Clip on pelmet cover for fixed glass profile. Anodised aluminium. SAA
84/33	3 m	
84/53	5 m	

87/00	SV-X80. Single door complete fitting set.
-------	---

87/84	Top track side fixing bracket. For fixing to adjacent glass overpanel
-------	---

87/85	Top track end cap
87/86	Fixed glass profile end cap

41/22	2 m	Full width bottom guide channel c/w brush strip. Aluminium. Not anodised. To suit 8-12mm thick glass.
41/32	3 m	
41/62	6 m	





## SYNCHRONISED BIPARTING



**Application.** High quality *top hung* sliding door gear system for *straight sliding* frameless glass doors. For domestic or light / medium duty commercial frameless glass partitions. A *synchronised biparting* system which allows a *pair* of biparting glazed doors to operate together.

**Features.** A special application which utilises the SV-A80 system (see page 17). The standard sets are complimented by an additional cable and pulley system which connects the *two* doors together and allows them to both open and close together, thereby complimenting the high quality sliding action of the standard system with added functionality.

TOP HUNG  
STRAIGHT SLIDING  
SYNCHRONISED BIPARTING

80 kg



SV-A40/A60/A80 de 40 a 80kg 8-10 mm 40x30 mm



Cód.

66/23 2 m  
66/33 3 m  
66/53 5 m

Top track. Anodised aluminium. SAA

86/00

SV-A80. Single door complete fitting set (2 sets required)

101/14

Complete fitting set for a **PAIR** of synchronised biparting doors.

## TELESCOPIC PROGRESSIVE



**Application.** High quality *top hung* sliding door gear system for *straight sliding* frameless glass doors. For domestic or light / medium duty commercial frameless glass partitions. A *telescopic* system which allows either *two or three* glazed doors to operate together to form a stepped partition across the opening when fully closed, and a neat stack of panels to one side of the opening when fully open.

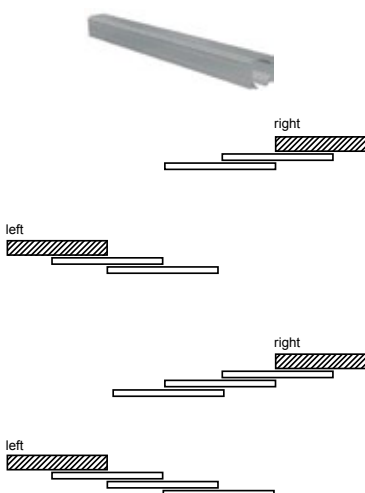
**Features.** A special application which utilises the SV-A80 system (see page 17). The standard sets are complimented by an additional cable and pulley system which connects the *two or three* doors together and allows them to both open and close together, thereby complimenting the high quality sliding action of the standard system with added functionality.

TOP HUNG  
STRAIGHT SLIDING  
TELESCOPIC

80 kg



40x30 mm 20 x 15 mm



Cód.

66/23 2 m  
66/33 3 m  
66/53 5 m

Top track. Anodised aluminium. SAA

101/17

Complete fitting set for **TWO** telescopic doors. **RIGHT HAND** Door width 600mm-1200mm. Max door weight 80Kgs.

101/18

Complete fitting set for **TWO** telescopic doors. **LEFT HAND** Door width 600mm-1200mm. Max door weight 80Kgs.

101/27

Complete fitting set for **THREE** telescopic doors. **RIGHT HAND** Door width 600mm-1200mm. Max door weight 80Kgs.

101/28

Complete fitting set for **THREE** telescopic doors. **LEFT HAND** Door width 600mm-1200mm. Max door weight 80Kgs.SYNCHRONISED TELESCOPIC  
PROGRESSIVE

**Application.** High quality *top hung* sliding door gear system for *straight sliding* frameless glass doors. For domestic or light / medium duty commercial frameless glass partitions. A *synchronised telescopic* system which combines the features of the synchronised biparting and *two* door telescopic systems shown above. A total of *four* glazed doors are connected together forming a stepped partition across the opening when fully closed, and neat stacks of panels on both sides of the opening when fully open.

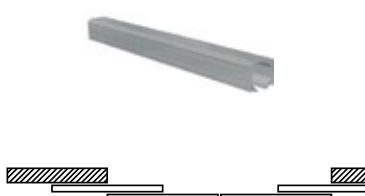
**Features.** A special application which utilises the SV-A80 system (see page 17). The standard sets are complimented by an additional cable and pulley system which connects the *four* doors together, thereby complimenting the high quality sliding action of the standard system with added functionality.

TOP HUNG  
STRAIGHT SLIDING  
SYNCHRONISED TELESCOPIC

80 kg



40x30 mm 20 x 15 mm



Cód.

66/23 2 m  
66/33 3 m  
66/53 5 m

Top track. Anodised aluminium. SAA

101/16

Complete fitting set for **FOUR** synchronised telescopic doors. Door width 600-870mm. Max door weight 80Kgs.



## SV Softbrake straight sliding frameless glass partition doors

**Application.** High quality *soft close braking* mechanism for *straight sliding* frameless glass doors. For domestic or light / medium duty commercial glazed partitions.

**Features.** Suitable for use with **SAHECO SV A80** straight sliding systems for frameless glass panels (see page 17).

A patented two stage mechanism; firstly a piston gently slows and stops the sliding door then the closing mechanism gently and quietly pulls the door into the fully closed or open or both position. Mechanism acts only on the last 100mm of the doors travel, thereby protecting the edge of the door from striking the frame jamb on either or both the opening and closing cycles.

### TOP HUNG STRAIGHT SLIDING SOFT CLOSING / OPENING MECHANISM

80 kg



33x33 mm

70x30 mm

Min. 8-10 mm

Cód.

105/20	2 m	Top track. Anodised aluminium. SAA
105/30	3 m	
105/50	5 m	



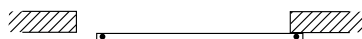
996090

SV SOFTBRAKE  
Complete softbrake mechanism  
for single door



86/01

Complete fitting set for single door



# STAINLESS STEEL

## TUBULAR SYSTEMS

Designer *top hung* or *bottom rolling* sliding door gear systems for *straight sliding* timber and frameless glass partitions. All tracks and fittings *in grade 316* stainless steel. An exceptionally smooth and quiet sliding action complements an elegant and stylish appearance. Outstanding value for money. For *INTERIOR* domestic or light / medium / heavy duty commercial partitions. Unique bottom brake stops c/w lead in feature.

FURNITURE  
TIMBER  
INDUSTRIAL  
GLASS  
STAINLESS STEEL

### SV-I45 SV-I46



**Application.** High quality *top hung* sliding door gear system for *straight sliding* domestic or light / medium duty *shower cubicle* (SV-I45) or *partition* (SV-I46) applications in *frameless glass*.

**Features.** Stainless steel tubular top track. Fixings for side walls or glass over panels. Also for fixing to end walls. Corner applications possible. Clear threshold designer bottom guide.

Alternative systems are available for shower applications to suit 10-12mm thick glass and panel weights up to 120Kgs.

#### TOP HUNG STRAIGHT SLIDING STAINLESS STEEL

45 kg



20 mm



6-8 mm



20 x 15 mm

Cód.			Cód.		
53/20 53/30 53/60	2 m 3 m 6 m	Top track. Tubular stainless steel. SSS	50/58		Top track side fixing bracket to glass. Concealed
50/06		SV-I45. Single door complete fitting set	50/59		Top track side fixing bracket to wall. Concealed
50/07		SV-I46. Single door complete fitting set	50/67		Top track end fixing bracket to wall
51/58		Top track side fixing bracket to glass. Standard	50/65		Top track hinged bracket for corner applications.
51/59		Top track side fixing bracket to wall. Standard	120/53 120/54		Bottom brake stop with lead in feature

### SV-I120



**Application.** High quality *top hung* sliding door gear system for *straight sliding* medium / heavy duty *partition* applications in *frameless glass*.

**Features.** Stainless steel tubular top track. Fixings (standard or concealed) for side walls or glazed over panels. Also for fixing to ceilings or end walls. Corner applications possible. Clear threshold designer bottom guide.

Alternative systems are available for timber doors up to 120Kgs and also for frameless glass or timber doors up to a max weight of 240Kgs.

#### TOP HUNG STRAIGHT SLIDING STAINLESS STEEL

120 kg



25 mm



10-12 mm



20 x 15 mm

Cód.			Cód.		
120/20 120/30 120/60	2 m 3 m 6 m	Top track. Tubular stainless steel. SSS	120/64		Top track side fixing bracket to wall. Concealed
120/00		SV-I120. Single door complete fitting set	120/80		Top track ceiling fixing bracket. Concealed
120/61		Top track side fixing bracket to glass. Standard	120/82		Top track ceiling fixing bracket. Standard
120/62		Top track side fixing bracket to wall. Standard	120/65		Top track end fixing bracket to wall
120/63		Top track side fixing bracket to glass. Concealed	120/72		Top track hinged bracket for corner applications
			120/53 120/54		Bottom brake stop with lead in feature.

### SV-I120 Terra



**Application.** High quality *Bottom rolling* sliding door gear system for *straight sliding* medium / heavy duty *partition* applications in *frameless glass*.

**Features.** Bottom track in full or half round sections. Minimalist top guide channel for top fixing c/w integral draft / sound reduction strip.

#### BOTTOM ROLLING STRAIGHT SLIDING STAINLESS STEEL

120 kg



25 mm



25 x 10 mm



8-10 mm



20 x 15 mm

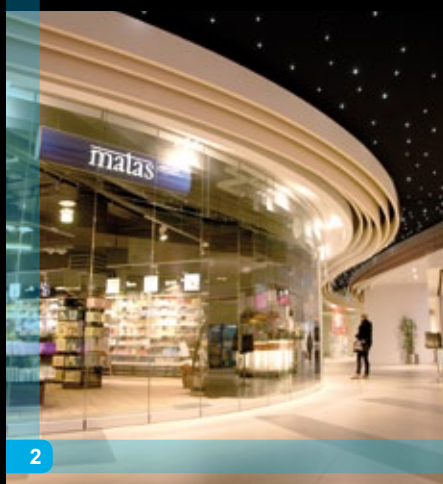
Cód.					
120/20 120/30 120/60	2 m 3 m 6 m	Bottom track. Tubular stainless steel. SSS			
120/21 120/41	2 m 4 m	Bottom track. Half round stainless steel profile. SSS			
41/22 41/32 41/62	2 m 3 m 6 m	Full width top guide channel c/w brush strip. Aluminium. Not anodised. To suit 8-12mm thick glass.			
120/01		SV-I120 TERRA. Bottom roller set for single door			
120/78		Top channel stops			
120/53 120/54		Bottom brake stop with lead in feature.			



# LIFESPACES



1



2



3



sliding folding

SV-I100 D

GLASS

sliding  
stacking glass

1. SV-P40
2. SV-P150
3. SV-P250

GLASS



1



2

TIMBER

sliding stacking timber

1. SF-P150
2. SF-P250

**Please note.** These systems are manufactured and supplied to order from component stock. Please contact your local Saheco UK Ltd Business Partner for further information including delivery times.



**FULL RANGE  
OF CATALOGUES  
AVAILABLE**

**You can view and download  
our catalogues:**

**saheco.co.uk**

For more information, or to request your copy of  
any of these catalogues (English version), please  
contact your local Saheco UK Business Partner.



**TIMBER / FURNITURE**



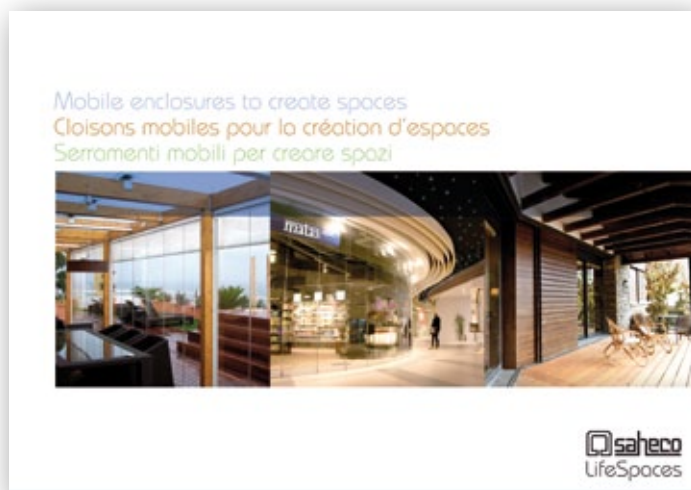
**GLASS**



**STAINLESS STEEL**



**LIFESPACES**







**SAHECO UK LTD.**  
Registered Office  
First Floor  
Vintage Yard  
59-63 Berdmondsey Street  
London SE1 3XF  
[sales@saheco.co.uk](mailto:sales@saheco.co.uk)

**[saheco.co.uk](http://saheco.co.uk)**



OFFICIAL SAHECO UK LTD BUSINESS PARTNER