



# No-Ha®Collection

## Invisible handles

- Doors
  - **No-Ha 2.0 mini:**
    - Invisible combination of handle and lock.....2
  - **No-Ha 2.0 L mini:**
    - Invisible combination handle/lock with bathroom lock.....3
  - **No-Ha 2.0 slide:**
    - Invisible handle for sliding doors and swingdoors..... 4
- Cupboards and drawers
  - **No-Ha 2.0 single:**
    - Invisible handle for cupboards and drawers.....5
- Accessories
  - **Knob visible on one side only**
    - Locco 2.0 L mini.....6
    - Cartel 2.0 L mini .....7
  - **Coverplate 2.0 mini**
    - Cover plates for finish .....8
  - **Tool 44**
    - Tool 44 mm diameter.....9

The No-Ha®2.0 is a real innovation which is why it was patented. The system integrates door handle and magnetic lock in one box. No-Ha®2.0 enables doors to be opened and shut without a visible door handle.

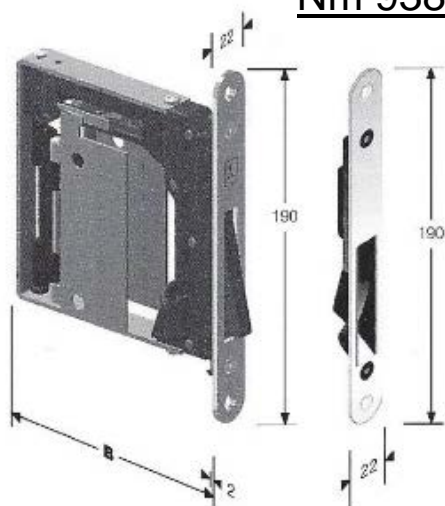
The handle can be completely hidden by giving the catch the same finish as the door and walls.

No-Ha®2.0 is part of the No-Ha collection, which includes the No-Ha Slide for sliding doors, No-Ha for drawers, cupboards and other accessories such as plates, wc handles (possible with No-Ha Nm 937)

[www.no-ha.com](http://www.no-ha.com)



### Nm 938/S0/..



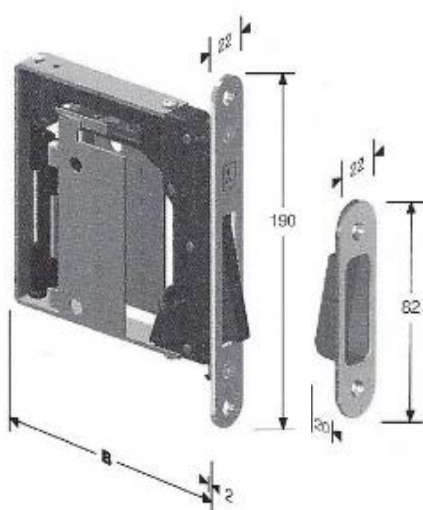
### No-Ha 2.0 mini

### /S0/..

|                         |              |
|-------------------------|--------------|
| Standard - Satin Chrome | Nm 938/S0/SC |
| Polished Chrome         | Nm 938/S0/PC |
| Polished Brass          | Nm 938/S0/PB |



### Nm 938/S5/..



### No-Ha 2.0 mini

### /S5/..

|                         |              |
|-------------------------|--------------|
| Standard - Satin Chrome | Nm 938/S5/SC |
| Polished Chrome         | Nm 938/S5/PC |
| Polished Brass          | Nm 938/S5/PB |

The No-Ha®2.0 is a real innovation which is why it was patented. The system integrates door handle and magnetic lock in one box. No-Ha®2.0 enables doors to be opened and shut without a visible door handle.

The handle can be completely hidden by giving the catch the same finish as the door and walls.

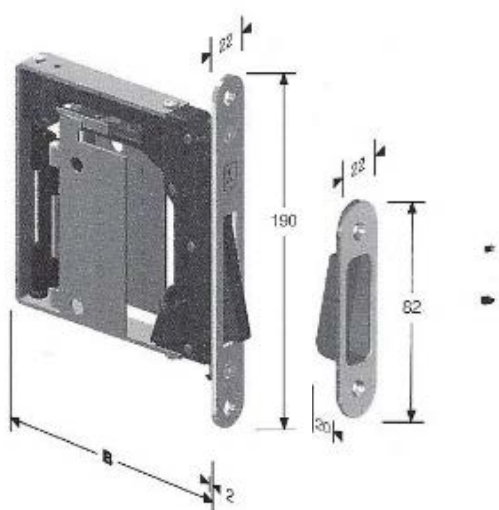
No-Ha®2.0 is part of the No-Ha collection, which includes the No-Ha Slide for sliding doors, No-Ha for drawers, cupboards and other accessories such as plates, wc handles

(possible with No-Ha Nm 937)

[www.no-ha.com](http://www.no-ha.com)



**Nm 937/S0/..**



**Nm 937/S5/..**

## No-Ha 2.0 L mini

## /S0/..

Standard - Satin Chrome  
Polished Chrome  
Polished Brass

Nm 937/S0/SC  
Nm 937/S0/PC  
Nm 937/S0/PB



## No-Ha 2.0 L mini

## /S5/..

Standard - Satin Chrome  
Polished Chrome  
Polished Brass

Nm 937/S5/SC  
Nm 937/S5/PC  
Nm 937/S5/PB



The No-Ha 2.0 Slide is a door handle that recedes into the door panel and can be used on all sliding doors that slide into the wall or in front of it. **The handle is operable on both sides with plenty of space for the fingers.**

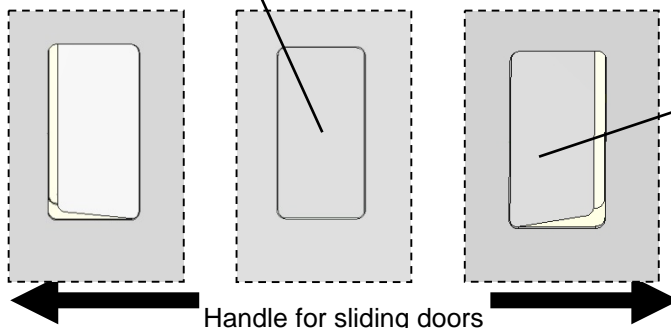
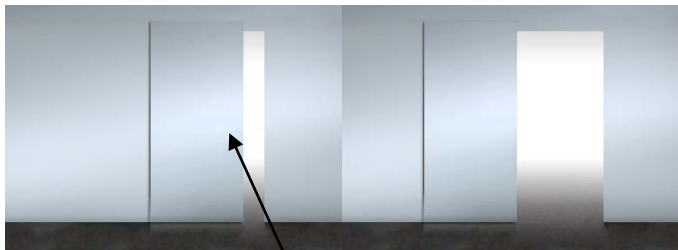
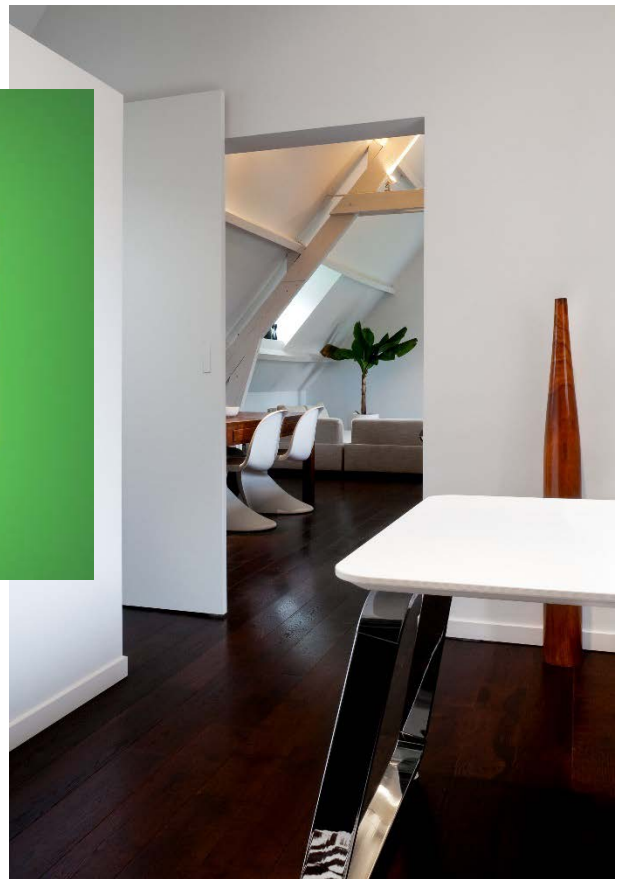
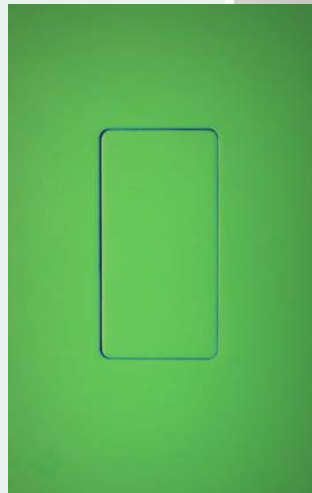
The handle has the same look as the No-Ha 2.0 for revolving doors.

The No-Ha cover plate is not part of the mechanism so that it can be made to match the finish of the door panel.

The No-Ha cover plate is available as an accessory in MDF and in brushed stainless steel.

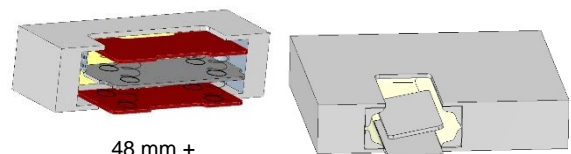
The milling in the door panel is the same as with the No-Ha 2.0 revolving doors.

An extra piece must be fitted on the top of sliding doors that slide into the wall so that the door can be drawn out of the wall.

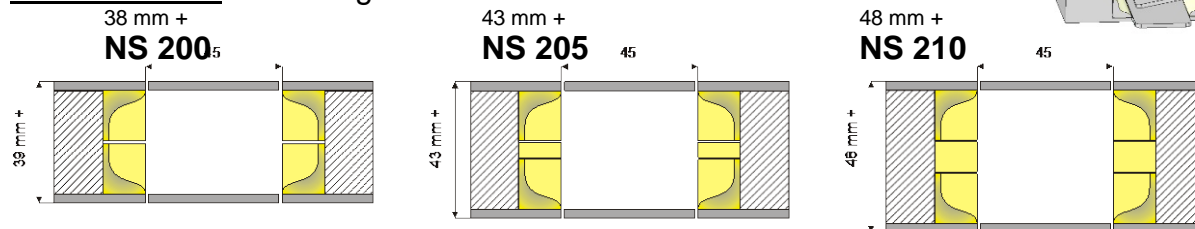


#### Dimensions:

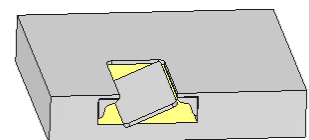
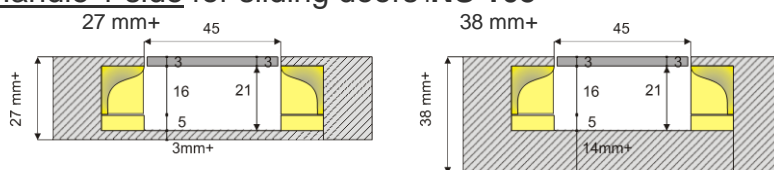
- Opening: 87mm x 45mm
- Cover plate: 85.5mm x 43.5mm
- **Note:** The cover plate is made to match the surface finish of the door panel and is NOT part of the door handle mechanism.



#### Handle 2 sides for Slidingdoors



#### Handle 1 side for sliding doors :NS 105



For cupboards and drawers see **No-Ha single**

The No-Ha Single is a handle **with plenty of space for the fingers**, that recedes into the panel and can be used on all drawers, sliding doors for cupboards and revolving doors for cupboards.

The handle has the same look as the No-Ha 2.0 for revolving doors and the No-Ha 2.0 slide for normal sliding doors.  
The No-ha cover plate is not part of the mechanism so that it can be made to match the finish of the door panel. .

The No-ha cover plate is available as an accessory in MDF and in brushed stainless steel.

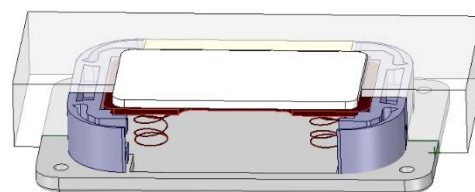
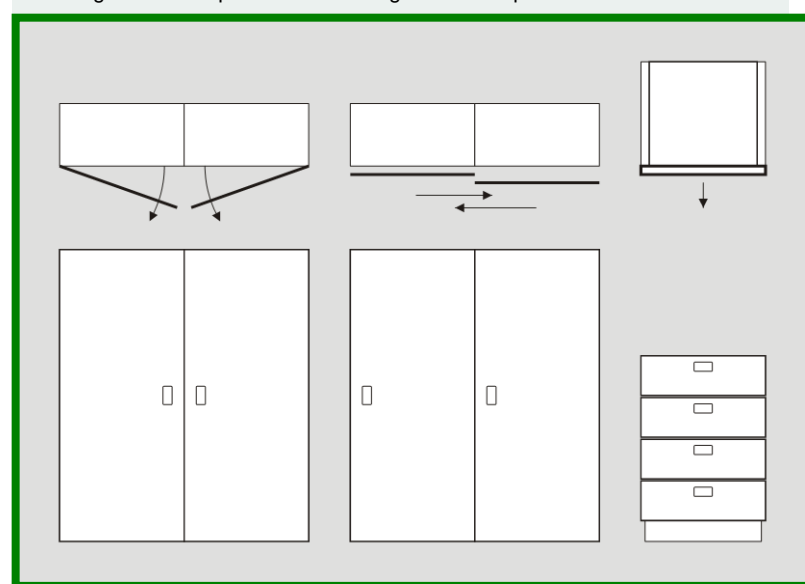
The milling in the door panel is the same as with the no-Ha 2.0 for normal sliding doors.

### **Nk 250: Handle for cupboards and drawers**

Revolvingdoors for cupboards

Slidingdoors for cupboards

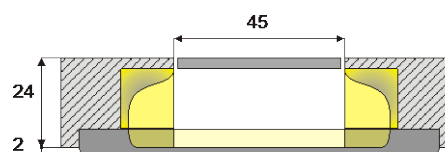
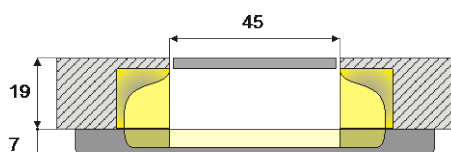
Drawers



### **Nk 250**

Measurements :

- **Opening:** 87 mm x 45 mm
- **Cover plate:** 85.5 mm x 43.5 mm
- **Note:** The cover plate is made to match the surface finish of the door and is NOT part of the door handle mechanism.





### Door knobs

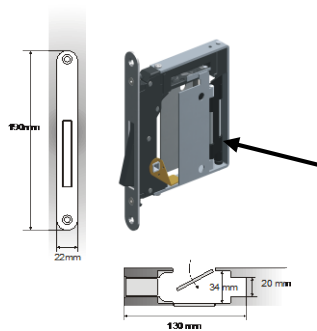
The “Locco” doorknob has been specially designed for the No-Ha 2.0 L lock in order to retain the door’s minimalist appearance as much as possible.

“Locco” is made of stainless steel and is used to lock the toilet door on one side.

This model, which is completely made of stainless steel, also avoids any metal interference to the magnetic mechanism of the No-Ha lock.

Other commercially available doorknobs may also be used, as long as the #6x6 square rod is made of a non-ferrous metal.

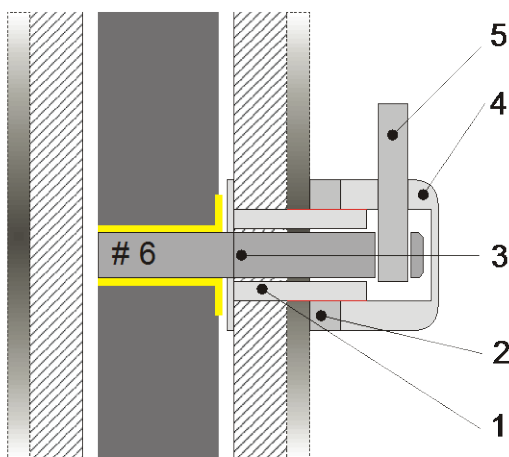
[www.no-ha.com](http://www.no-ha.com)



Door knob for  
**Nm 937**  
with WC lock # 6x6mm

### Remark!

In an emergency, it is possible to open the door from the outside in a simple manner by sliding a sheet of paper downwards between the door and the covering material where the lock is situated



Code: **S011**

### Assembly

- Fit component 1 on the inside of the door.
- Screw component 2 onto component 1
- Slide the square section, component 3, into the lock.
- Hand-tighten component 4 into component 1 (NOT too tightly).
- Finish by screwing component 5 into component 4, so that component 5 fits into the opening of component 3.

## Door knobs

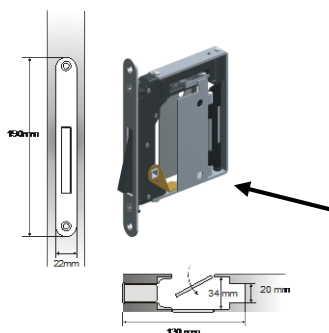
The "Cartel" doorknob has been specially designed for the No-Ha 2.0 L lock in order to retain the door's minimalist appearance as much as possible.

"Cartel" is made of stainless steel and is used to lock the toilet door on one side.

This model, which is completely made of stainless steel, also avoids any metal interference to the magnetic mechanism of the No-Ha lock.

Other commercially available doorknobs may also be used, as long as the #6x6 square rod is made of a non-ferrous metal.

[www.no-ha.com](http://www.no-ha.com)



Door knob for  
**Nm 937**  
with WC lock # 6x6mm



## Remark!

In an emergency, it is possible to open the door from the outside in a simple manner by sliding a sheet of paper downwards between the door and the covering material where the lock is situated

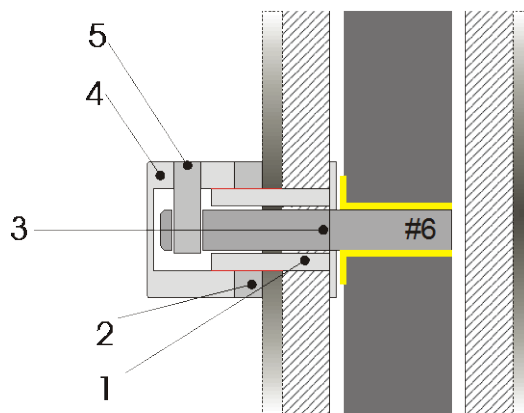
## Code:

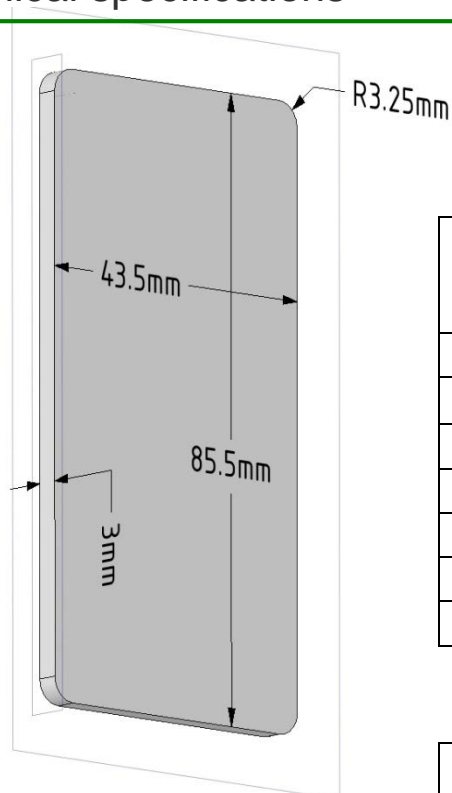
### Cartel ( door knob one side )

|                         |         |
|-------------------------|---------|
| Standard - Satin Chrome | S012    |
| Polished Chrome         | S012/PC |
| Polished Brass          | S012/PB |

## Assembly

- Fit component 1 on the inside of the door.
- Screw component 2 onto component 1
- Slide the square section, component 3, into the lock.
- Hand-tighten component 4 into component 1 (NOT too tightly).
- Finish by screwing component 5 into component 4, so that component 5 fits into the opening of component 3.

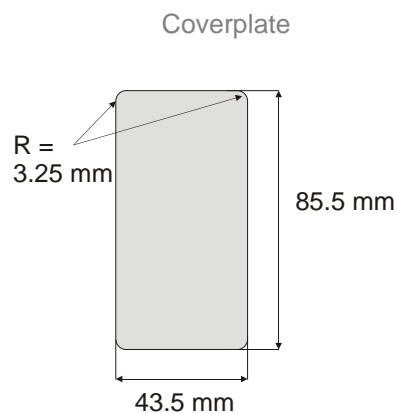
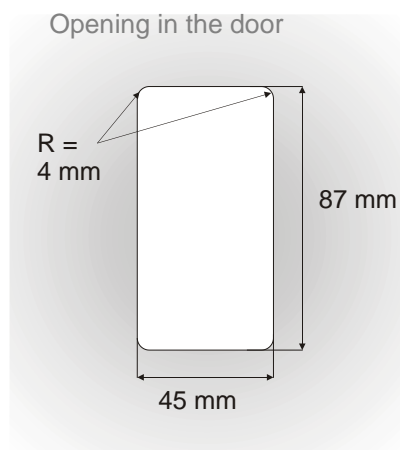




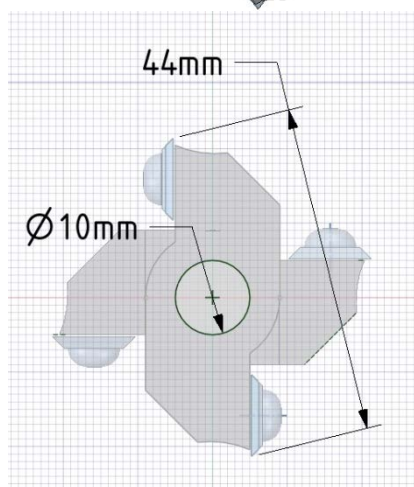
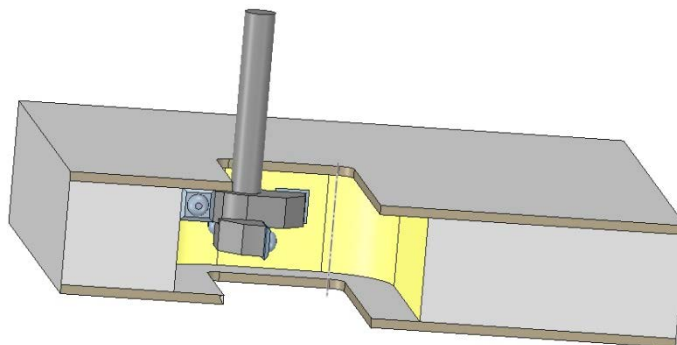
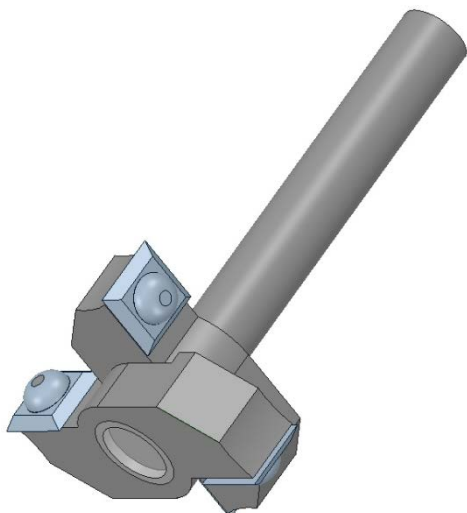
| COVERPLATE                               |   |
|--|---|
| Standard size for the following products |   |
| <b>Nm 937</b>                            | No-Ha 2.0 mini: lock with WC closure                          |
| <b>Nm 938</b>                            | No-Ha 2.0 mini: lock  |
| <b>NS 200</b>                            | No-Ha 2.0 Slide: Handle for sliding doors D=40 mm (thickness) |
| <b>NS 205</b>                            | No-Ha 2.0 Slide: Handle for sliding doors D=45 mm (thickness) |
| <b>NS 210</b>                            | No-Ha 2.0 Slide: Handle for sliding doors D=50 mm (thickness) |
| <b>NS 105</b>                            | No-Ha 2.0 Slide: Handle for sliding door <u>one side</u> .    |
| <b>NK 250</b>                            | No-Ha 2.0 Single: Handle for cupboards and drawers.           |

| Codes         | Coverplate finishes                   |
|---------------|---------------------------------------|
| <b>P01</b>    | MDF Plate with primer finish          |
| <b>P02</b>    | INOX Plate in brushed stainless steel |
| <b>P10/PC</b> | Polished Chrome                       |
| <b>P10/PB</b> | Polished Brass                        |

### Dimentions :







**CUTTER with 44 mm diameter**  
Milling out of the door cavity for all No-Ha products

|               |   |
|---------------|---|
| <b>Nm 937</b> | No-Ha 2.0 mini: lock with WC closure                          |
| <b>Nm 938</b> | No-Ha 2.0 mini: lock  |
| <b>NS 200</b> | No-Ha 2.0 Slide: Handle for sliding doors D=40 mm (thickness) |
| <b>NS 205</b> | No-Ha 2.0 Slide: Handle for sliding doors D=45 mm (thickness) |
| <b>NS 210</b> | No-Ha 2.0 Slide: Handle for sliding doors D=50 mm (thickness) |
| <b>NS 105</b> | No-Ha 2.0 Slide: Handle for sliding door <u>one side</u> .    |
| <b>NK 250</b> | No-Ha 2.0 Single: Handle for cupboards and drawers.           |

